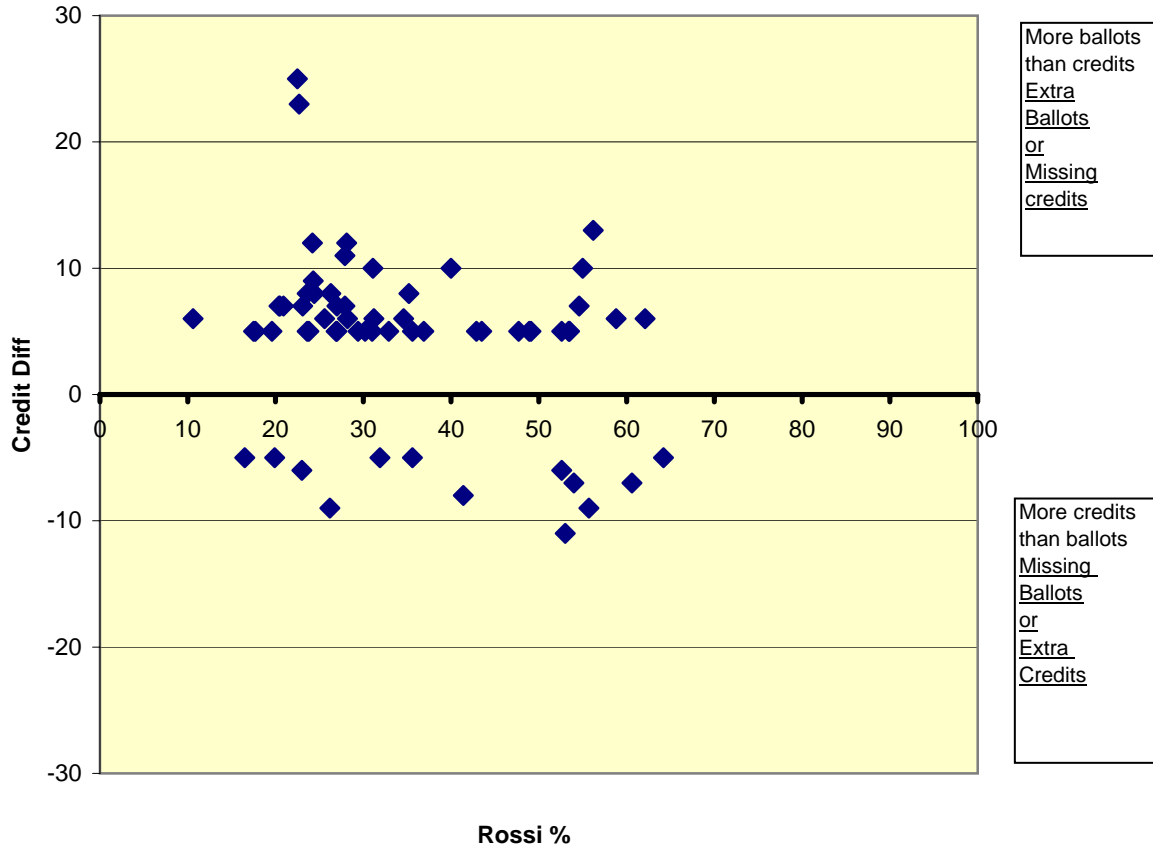


# Crediting Difference with Rossi Percentage

Includes only those precincts with an absentee crediting difference of MORE THAN + or - 4.



The Credit Difference is calculated as Ballots minus Credits.  
 A positive difference indicates missing credits.  
 A negative difference indicates missing ballots.

**Table 1. Largest Positive Differences**

Ref Prec	Name	Ballots	Credits	Difference	Rossi%	% Ballots
1 1770	SEA 36-1770	164	139	25	22.5	15.2
2 1774	SEA 43-1774	250	227	23	22.7	9.2
3 0327	COALFIELD	446	433	13	56.2	2.9
4 2115	SEA 43-2115	244	232	12	24.2	4.9
5 1558	SEA 37-1558	318	306	12	28.1	3.8

**Table 2. Largest Negative Differences**

Ref Prec	Name	Ballots	Credits	Difference	Rossi%	% Credits
1 3166	BEL 41-3166	630	641	-11	53.0	-1.7
2 3464	ISS 05-3464	685	694	-9	55.7	-1.3
3 1384	SEA 36-1384	169	178	-9	26.2	-5.1
4 0983	RNT 41-0983	300	308	-8	41.4	-2.6
5 0840	NEW 41-0840	696	703	-7	60.6	-1.0
6 2974	MORGAN	562	569	-7	54.0	-1.2